



BOTANICAL SOCIETY OF AMERICA

Mission: *The Botanical Society of America exists to promote botany, the field of basic science dealing with the study and inquiry into the form, function, development, diversity, reproduction, evolution, and uses of plants and their interactions within the biosphere.*

The objectives of The Society are to: *sustain and provide improved formal and informal education about plants; encourage basic plant research; provide expertise, direction, and position statements concerning plants and ecosystems; and foster communication within the professional botanical community, and between botanists and the rest of humankind through publications, meetings, and committees.*

I. Introduction

The following report provides an overview of the activities of the Botanical Society of America's business office over the past twelve months. Let me begin by thanking and acknowledging the Executive Committee for their support and direction. On behalf of the Executive Committee, the Society, and myself, I also thank and acknowledge the Society's staff, Rob Brandt, Beth Hazen, Claire Hemingway, Wanda Lovan, Amy McPherson and Johanne Stogran, for their efforts and dedication to the Botanical Society of America. What an exciting year! Once again, as a team, we were able to improve our ability to support BSA members, meetings and our mission.

II. Thank you!

I extend a special thank you to those members who donated to our endowment and to the BSA sectional/awards funds. Contributions totaled over \$15,600. At the meeting you will hear about our efforts to support future generations of botanists through the establishment of the BSA Legacy Society. It is exciting to see this aspect of the Society maturing and planning so positively for our future.

BSA Financial Summary - June 21, 2007			
	2007 YTD	2007 Total Budget	2006 YTD
Operations			
Income	\$ 979,611.45	\$ 1,022,302.00	\$ 884,541.07
Expenditure	\$ 630,626.86	\$ 1,006,724.00	\$ 621,755.00
Balance	\$ 348,984.59	\$ 15,578.00	\$ 262,786.07
Meeting			
Income	\$ -	\$ 118,000.00	\$ 11,692.07
Expenditure	\$ 2,761.22	\$ 103,018.00	\$ 18,225.20
Balance	\$ (2,761.22)	\$ 14,982.00	\$ (6,533.13)
Investments			
Income	\$ 458,040.33	\$ 56,200.00	\$ 178,547.61
Expenditure	\$ 34,860.93	\$ 61,600.00	\$ 34,933.07
Balance	\$ 423,179.40	\$ (5,400.00)	\$ 143,614.54
Overall Position			
Income	\$ 1,437,651.78	\$ 1,196,502.00	\$ 1,074,780.75
Expenditure	\$ 668,249.01	\$ 1,171,342.00	\$ 674,913.27
Balance	\$ 769,402.77	\$ 25,160.00	\$ 399,867.48
Current Account Balances - June 21, 2007			
St. Louis Cash	\$ 74,357.98		
St. Louis MM	\$ 498,053.30		
Meeting	\$ 49,096.15		
Smith Barney	\$ 3,638,944.83		
Balance	\$ 4,260,452.26		

III. Financial Update

BSA account balances are provided in the table to the left. Operational income and expenditure are up over the same period last year. Both fall within a reasonable range when compared to the 2007 budget for the first eight months of the financial year. I anticipate we will finish the year close to the budgeted income and slightly below anticipated expenditure.

Please note: The meeting finances are being managed by the American Society of Plant Biologists, thus explaining the lack of income/expenditure in this area. We are expecting to meet budget.

The BSA Smith Barney investment account stands at \$3,638,944.83. We have had a good year in terms of investment growth.

BSA Treasurer Kent Holsinger will provide further financial details in his report, including the 2008 BSA Budget.

IV. American Journal of Botany

The 2008 American Journal of Botany institutional rates have been set at \$565.00. This is an increase of 9.7% (\$50.00) over the 2007 rate.

Membership & Institutional Subscription Activity

	Print Subscriptions			Online Only			Total Overall Relationship			
	USA	Other	Total	USA	Other	Total	Total	US	Other	Total
Member Subscriptions										
Jun-02	612	329	941	987	314	1,301	2,242	1,599	643	2,242
Jun-03	584	342	926	1,055	329	1,384	2,310	1,639	671	2,310
Jun-04	537	320	857	940	327	1,267	2,124	1,477	647	2,124
Jun-05	532	260	792	1,037	294	1,331	2,123	1,569	554	2,123
Jun-06	462	291	753	934	330	1,264	2,017	1,396	621	2,017
Jun-07	471	272	743	1,516	558	2,074	2,817	1,987	830	2,817
Institutional Subscriptions										
Jun-02	1,309	380	1,689	9	3	12	1,701	1,318	383	1,701
Jun-03	1,217	344	1,561	23	14	37	1,598	1,240	358	1,598
Jun-04	1,212	342	1,554	34	17	51	1,605	1,246	359	1,605
Jun-05	1,177	297	1,474	44	44	88	1,562	1,221	341	1,562
Jun-06	1,106	274	1,380	61	61	122	1,502	1,167	335	1,502
Jun-07	1,033	264	1,297	102	74	176	1,473	1,135	338	1,473

We have registered 1,473 Print, plus Print & Online institutional subscriptions for the year to date. By year's end we should exceed the budgeted sales volume of 1,492 subscriptions. Sales revenue is \$736,892 as compared to a budget of \$710,000.

Member subscriptions, at 732 print copies, have exceeded the budget of 700.

In March 2007, the Executive Council voted to move our printing operations to Sheridan Press. All items are on track for the move to Sheridan Press. We have also gained back the lost time in regards to Journal production and you will receive the July issue during the first week of July!

Recommendation 1: It is recommended member rates for the AJB increase by \$5 for professional (\$85) and emeritus/retired members (\$55) for the 2008 year, a 6.25% increase.

V. Botany Conferences

Upcoming Botany Conferences:

- 2008 – Joint meeting with the Canadian Botanical Association-L'Association Botanique du Canada, ABLs, AFS, and ASPT in Vancouver
- 2009 – Joint meeting with the Mycological Association of America, ABLs, AFS, and ASPT in Snowbird
- 2010 – to be discussed by the committee in Chicago (East Coast, Caribbean)
- 2011 – Alaska?

VI. BSA Membership & Subscriptions

Membership levels continue to be a bright spot for the BSA. Membership in the Society stands at 2,817. This is led by a significant increase in student numbers, but is evident across all membership categories.

The membership committee will meet on Sunday, 8 July, in Chicago, to discuss a fall student

Membership Types

	2007	2006	2005	2004	2003
Corresponding	49 2%	49 2%	51 2%	50 2%	49 2%
Life	54 2%	51 2%	48 2%	46 2%	46 2%
Emeritus	194 7%	114 5%	132 6%	92 4%	149 6%
E Family	24 1%	14 1%	16 1%	5 0%	7 0%
Retired	9 0%				
R Family	6 0%				
Professional	1515 54%	1393 62%	1511 65%	1521 69%	1667 68%
P Family	227 8%	187 8%	181 8%	145 7%	161 7%
Student	635 23%	371 17%	377 16%	354 16%	347 14%
S Family	13 0%	11 0%	7 0%	5 0%	4 0%
K-12 Teachers	28 1%	19 1%	5 0%	4 0%	8 0%
Affiliate	21 1%	7 0%	0 0%	0 0%	0 0%
Associate	9 0%	13 1%	0 0%	0 0%	0 0%
Amateur	37 1%	16 1%	0 0%	0 0%	0 0%
	2817	2245	2328	2222	2438
Professional	2074 74%	1808 81%	1939 83%	1859 84%	2079 85%
Student	648 23%	382 17%	384 16%	359 16%	351 14%
Other	95 3%	55 2%	5 0%	4 0%	8 0%
	2817	2245	2328	2222	2438

membership drive. We will also come up with a plan to ensure that all members renew early for the 2008 year.

A few years ago, we moved away from early-registration discounts. We may, however, look at a special rate for returning students in 2008. Our goal is to maintain growth within this group.

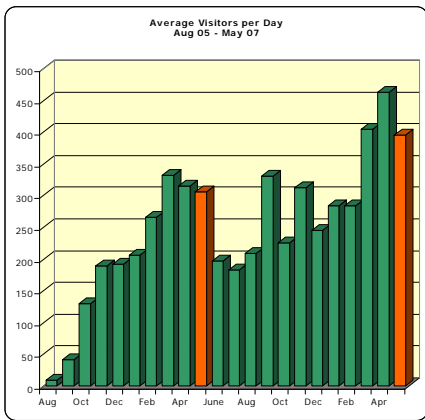
US and Non-US Memberships

	USA	Other Nations	Total Members
Sep-02	1,667	693	2,360
Sep-03	1,709	691	2,400
Sep-04	1,541	684	2,225
Sep-05	1,676	613	2,289
Sep-06	1,563	682	2,245
Jun-07	1,987	830	2,817

Recommendation 2: It is recommended membership rates for 2008 remain the same.

Recommendation 3: It is recommended we provide students an incentive to renew, with an “early renewal” rate for of \$15.

Recommendation 4: It is recommended we hold a new student membership drive beginning at the opening of classes in the fall of 2007 at a gift-rate of \$10 per student. In conjunction with this drive it is requested the sections waive fees to allow gift memberships to include sectional memberships.



VII. PlantingScience

PlantingScience continues to grow at a manageable rate. We were awarded a Monsanto Fund grant of \$81,173 over a two-year period for materials development. We are moving forward with plans and Claire has arranged for a topic development group to get together in St. Louis in August to prepare three draft units. We will also be shifting the Advisory Board meeting to the fall of this year in order to have all three units available for testing in the spring of 2008.

Please take the time to look at the program. We are in the process of exploring ways you can use PlantingScience in

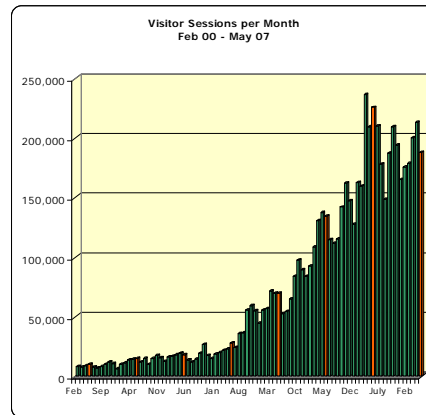
meeting your broader impact commitments in NSF grants and we’d appreciate your ideas in this area.

VIII. Website

The growth trend on the BSA website continues to flatten. We will need to add resources and find new areas of interest to keep growth heading upward. We ask all sections to consider how they might contribute to the BSA website.

IX. Thinking Green

BSA is developing a relationship with several plant-related organizations in an effort to provide access to our expanding infrastructure, including our membership-subscription and our conference-abstract software. We are in discussions with the Society for Economic Botany Council, Center for Plant Conservation and the Society of Mathematical Botany. We currently provide limited membership support to the American Fern Society.



Thanks, Bill